

# Understanding NDIS Budgets

---

## Core –Daily Activities, Social, Community and Economic Participation, Consumables and Transport

**This funding may be used flexibly to access:** (NB general information only. You will be provided with tailored options throughout your provision of support coordination)



**Domestic Assistance**



**Personal Care Supports**



**Meal Preparation**



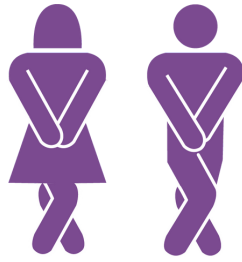
**Short Term  
Accommodation  
(Previously known  
as respite)**



**Employment &  
Volunteering Support**



**Transport**



Continance Aids



Level 1 & 2 Assistive  
Technology



Group Activities

---

## Capital Supports

**Assistive Technology – These items need Assessments and Quotes submitted to the NDIA for approval but can include;**

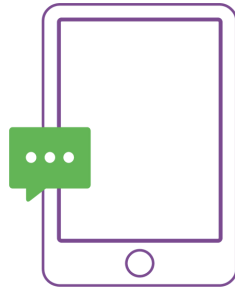
This is a guide only. There may be many other items that fall under this category.



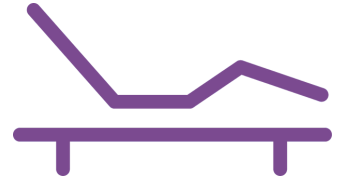
Wheelchair



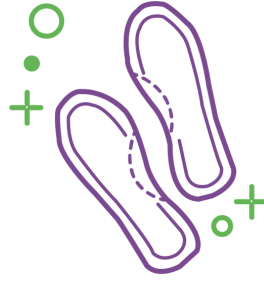
Mobility Scooter



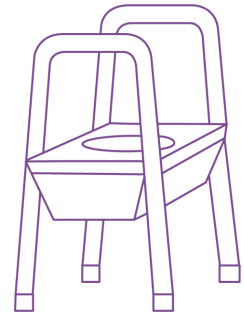
**Communication  
Device**



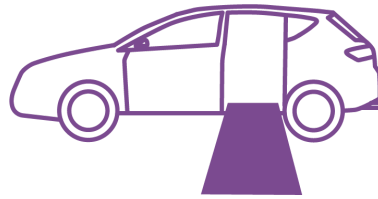
**Electric Bed**



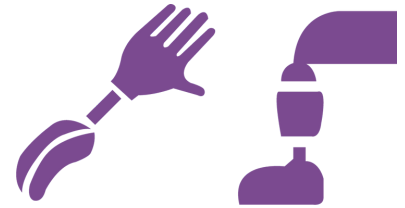
**Orthotics/Medical  
Grade Footwear**



**Commodes**



**Vehicle  
Modifications**



**Prosthetics**

**Home Modifications – Can be changes to your owned home to assist with accessibility and safety.**

This is a guide only. There may be many other items that fall under this category.



**Disability Accessible Bathroom**



**Wider Doorways**



**Access Ramps**



**A builder will need  
to provide a quote**



**An occupational  
therapist will need  
to do an assessment**

**so the NDIA can decide if they approve the request.**



---

**Capacity Building Supports - are broken into  
categories and only flexible within that  
particular category**



**Support Co-ordination**  
Help to connect you to  
services



**Improved Living  
Arrangements**  
Help to find and  
maintain a place to live



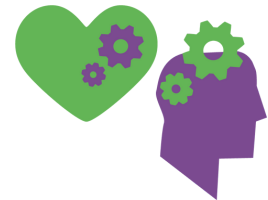
**Increased Social & Community Participation**  
Increased support to get involved & meet new people



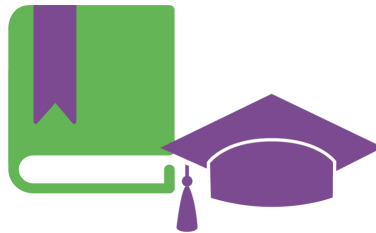
**Finding & Keeping a Job**  
Help to get job ready & maintain employment



**Improved Relationships**  
Help to understand & manage my emotions



**Improved Health & Well-being**  
Help to manage my diet & exercise



**Improved Learning**  
Help to select & participate in higher education



**Improved Life Choices**  
Help to manage the NDIS Plan & pay the bills



**Improved Daily Living**  
Help to develop your skills & independence